

A close-up photograph of several white magnolia flowers in bloom, attached to dark brown branches. The background is softly blurred, showing more flowers and a hint of a blue sky. The overall tone is bright and natural.

*The
Glenfarg
Newsletter*

Issue 240 March 2019

Suggested donation £1

Contents

Editorial.....	3
Contacts.....	4
Village Hall For All.....	6
Arngask Church News	8
Douglas Fraser	9
The GITs.....	11
Arngask Primary News.....	12
Glenfarg Cinema.....	16
GDIB.....	18
Friends Of Wallace Park.....	19
Glenfarg Arts Project.....	20
W.R.I.....	21
Tennis Club.....	22
Book Review.....	24
Lochelbank Wind Farm Fund.....	26
Village Hall Developments.....	27
Cycling Round Loch Leven.....	30
Therepet.....	32
Glenfarg Community Company .	35
Glenfarg History Project.....	36
Scouts And Cubs Curling.....	38
A Tale Of Two Cakes.....	40
Running For Charity.....	43
Folk Club.....	44
Glenfarg CC Minutes.....	53
Advertiser's Index.....	71
General Information.....	72

Advertise In The Glenfarg Newsletter

You can advertise in the Newsletter for very reasonable rates as below which are annual i.e. 4 issues.

Full Page £70 per annum

Half Page £35

Quarter Page £20

Single issue advert prices available on request.

Advert enquiries should be made by initially contacting the editorial team.

Editor

Robin Watson 830 355
newsletter@glenfarg.org

Treasurer

Daniel Horsman 830 067

Distribution

Glenfarg Village Store 830 201

Front Cover

The Editor

The views expressed by contributors to this newsletter are entirely their own. Publication within this newsletter does not imply that the Editors or Community Council agrees with, or supports, those views. The editor will not be held responsible for any factual inaccuracies, or incorrect inferences drawn.

Advertisements in the Newsletter are accepted in good faith. The Community Council and the editor are not in any way endorsing the businesses advertised in this publication.

DEADLINE FOR NEXT ISSUE

If you would like to contribute to the next issue, please inform us with details by early May to allow us adequate time to plan the issue. Contributions should reach us by 15th of May. Thank you.

Editorial

There are several changes to your newsletter this year. Firstly, the community council have decided that the newsletter will now only be issued four times each year - March, June, September and December. It was felt that, with most events now being advertised on the various Grapevine services, the newsletter no longer needed to carry all this time-specific information every second month. This will give your editor, a volunteer who does this in his spare time, a bit of breathing space between issues. Don't forget that, if you don't have internet access to find out what is happening locally, a printout of the Grapevine is posted every week on the CC notice board. And of course, the newsletter is always happy to print details of your organisation's future plans.

The newsletter now has a colour front page and it is hoped in the future that pupils at Arngask Primary School will provide the design for the cover. It is hoped this will become a regular feature.

Also new in this issue is an index to advertisers which can be found on the inside of the last page. A requested item, this should make finding the required service easier. Talking about advertisers please note the disclaimer on page 2. Advertisements are accepted by the newsletter in good faith and the editor and the Community Council can not be held responsible for their use.

The Arngask Primary News is a section of the newsletter which has been written and designed by the editorial team of pupils at Arngask Primary School. This involves all of the classes in the school. Well done to our budding reporters.

Meet your new Councillor Douglas Fraser who has been appointed to the Community Council. Read his mini biography on page 9.

New residents in the Copperfields estate are being given a great offer of free membership for a year to the Glenfarg Tennis Club. Read Tim Corcoran's report on the upcoming season and details of the offer on page 22.

Glenfarg Community Cinema will be showing, by popular request, another silent movie night. With Dave Watt on the piano the movie is *The General* starring Buster Keaton. As usual thanks to all the regular contributors but here is another plea for stories and articles. My readers... why not send an article, story, or poem to be published in the Newsletter. In the autumn we will be holding another short story competition so maybe now is the time to start writing.

Robin Watson

e-mail: newsletter@glenfarg.org



Contacts

Service/Organisation	Contact Name/ Email Address	Telephone
Community Council	Chairperson: Margaret Ponton	830 611
	Secretary: Ian Pilmer secretary@glenfarg.org	830 817
P&K Councillor	Cllrs. Barnacle, Watters, Purves and Robertson	See P&KC website
Police	Non emergency contact number	101
	Crimestoppers	0800 555 111
Household Utilities	Scottish Water Helpline	0800 0778 778
	Scottish Hydro Electric Helpline	0800 300 999
Dog Warden	Kirsteen Mackenzie	01738 476476
PA Contact	Mark Crossey	830 201
Arngask Church	Bill Macpherson (Session Clerk) Session.Clerk@ada-church.org.uk	830 430
Arngask School	Marie Lyon (Head Teacher)	867 250
Accordion & Fiddle	Stewart Smith isobelsmith45@btinternet.com	830 6296
Baby & Toddlers	Catherine Mason catherinemason@hotmail.co.uk	07583 022 608
Badminton Club	Alan Clark	830 246
Badminton Ladies	Annette Eadie annette_eadie@hotmail.com	830 547
Beavers	Christine Morton	830 210
Bowling Club	Karen Parker glenfargbc@gmail.com	830 529
Bridge Club	Evelyn Brockbank	830 713
Brownies	Jan Pedley glenfargbrownies@gmail.com	830 195

Service/Organisation	Contact Name/ Email Address	Telephone
Chair Yoga	Caroline Waring	830 239
Cubs	Robert Morton robert.morton1@tesco.net	830 210
Curling - Men's	Lorne Findlay	830 441
Curling - Women's	Margaret Jenkins	830 453
Folk Club	Philip Ponton info@glenfargfolkclub.com	830 611
GDIB	Kate Armstrong	830 343
Community Cinema	Janet Watson	830 355
Glenfarg Oil Buying Syndicate	Tom McAulay gobs@glenfarg.org	07786 705261
Knit & Natter	Ineke Watt	830 345
Neighbourhood Watch	Linsey Penman	830 549
Old Folks Association	Philip Ponton	830 611
Riding School	Angela Stocks	830 262
Scouts	Robert Morton robert.morton1@tesco.net	830 210
SWI	Margaret Scott	830 369
Tennis Club	Tim Corcoran tim@taraw.plus.com	830 879
Total Body Circuit	Julie Ramsay jrinsanity@gmail.com	830 370
Village Hall	Tanya McKibbin villagehallbookings@gmail.com	07984 275756
Website	Janet Watson <i>editor@glenfarg.org</i>	830 355
Wine Club	David Aird	830 370
Zumba	Gale Paterson	07823 334 476

A Village Hall for All

Day	Time	Organisation
Monday	9.30am - 11.30am	Baby & Toddler Group
	6.00pm - 7.30pm	Cubs
	8.00pm - 10.00pm	Ladies' Badminton
	7.30pm - 9pm 1st Monday every other month	CC Meeting
Tuesday	9.30am - 10am	Metafit
	5.45pm - 6.45pm	Beavers
	7.30pm - 9.00pm	Scouts
Wednesday	6.00pm - 7.30pm	Brownies
	8.00pm - 10.00pm In winter	Mixed Badminton
	7.00pm - 11.00pm 1st Wednesday of month	Accordion & Fiddle Club
Thursday	10am - 12 noon	Coffee Morning
	7.30pm 2nd Thursday Sept to May	WRI
Friday	10.00am - 11.00am	Chair Exercise
	7.30pm - 10.00pm 2nd Friday Sept to April	Community Cinema

To check on the Village Hall bookings, go to the village website
www.glenfarg.org
 and look at the on-line calendar under 'Hire the Hall'

JAMESFIELD FARM SHOP



**CELEBRATING OVER 30 YEARS CHEMICAL FREE
FRESH FROM OUR FARM TO YOUR PLATE**

Fresh Organic Produce

Homemade Baking

Delicious Steak Pies – Can be made to order

Mr C's Traditional Award Winning Pies

Highland Drovers & Puddledub Meats

Cairn O' Mohr Wines & Organic Wines and more

Fair Trade Products & Handcrafted Gifts

**RESTAURANT WITH VIEWS OF THE TAY ESTUARY
- Try Our New Menu -**

Traditional and Delicious Home Cooked Food

Vegetarian & Vegan Food Available

Mon – Sat 9.00am – 5.00pm Sun – 10.00am – 5.00pm

Jamesfield Farm Shop and Farmhouse Kitchen

By Abernethy, Cupar, KY14 6EW

Tel: 01738 850 498 Email:

jamesfieldfarm@btconnect.com

<https://www.facebook.com/jamesfieldfarmshopandrestaurant>

www.jamesfieldfarmshopandrestaurant.co.uk



Church News



Rev. Stan Kennon now has a couple of months under his belt and is settling in as our new minister. He has already been out and about getting to know not just church members, but the wider community.

Stan can be contacted on **01738 850194**, or by e-mail for non-urgent enquiries at minister@ada-church.org.uk

A new calendar for the church means Arngask Church services start at 9.30am with an 11.00am service in Abernethy.

The Pastoral Team are now up and running and they can be contacted via Gill Boardman on 01738 850940 or by e-mail Pastoral.Team@ada-church.org.uk

Reminder that the Church Hall is available for hire and enquiries should be addressed to Sheona Reid 01577 830388

For more information contact the Session Clerk,

Bill Macpherson on 01577 8730430 or Session.Clerk@ada-church.co.uk

Douglas Fraser

Your New Community Councillor



Originally from Edinburgh, Douglas and his wife Diane have lived in small villages since getting married in 1980 and moved to Glenfarg over twelve years ago. With three grown up children and four grandchildren family life tends to be pretty busy.

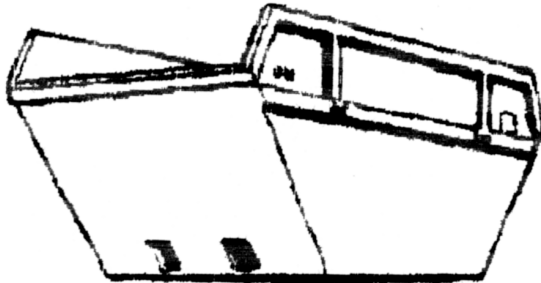
Having retired in 2017 from his position of Scottish Regional Director in a medium sized engineering

business, within the construction industry, where he worked for 32 years, Douglas spends his time either in his wood workshop making toys and furniture or helping the dedicated volunteers of the Glenfarg & Duncreavie Gardens in Bloom team or helping the Glenfarg Improvement Team. Douglas's other interests include golf, curling, cycling and hill walking.

Douglas has contributed to local communities when possible having been the Commanding Officer of a Cadet Forces unit, receiving the Cadet Forces Medal in recognition of his service and also Chairman of the 77th Fife Scout Group for several years. Douglas was also awarded a Lord Lieutenants Certificate of Meritorious Service for his community service. As part of the Glenfarg Community Council Douglas looks forward to bringing his experience to the team and contributing to the village life.



Binn Skips



Binn Farm • Glenfarg • Perthshire
PH2 9PX

Tel. 01577 830 833
Fax. 01577 830 488

GLENFARG IMPROVEMENT TEAM



By now most of you will have heard of the GITs, that trusty band of boys who like to put the world to right whilst putting some Glenfarg bits and pieces to right. Jobs that have been undertaken by these hardy souls recently have included the refurbishment of the back door of the hall, erecting a greenhouse for GDIB,

restoring the bench at the War Memorial plus numerous wee jobs and generally lending a hand when called upon.

They have some jobs in the pipeline e.g. refurbishment of the old phonebox and some of the street furniture.

They have a liking for coffee and chocolate biscuits and specialise in blether and laughter. Would you like to join them on their forays into ventures new? If so contact John 830343 or David 830370 and who knows if

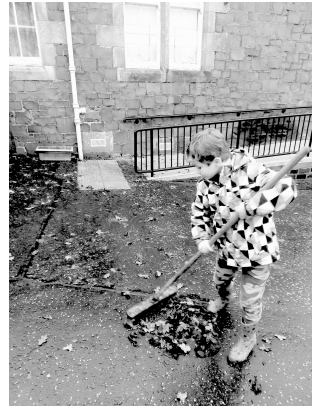


enough of you come together a Men's Shed could be the next project for Glenfarg

ARNGASK PRIMARY NEWS

GARDENING DAY (By Joshua Horsman and Suliven Harris)

Last term Arngask Primary had a Gardening day. We weeded and cleaned different areas of our playground, like our Adventure playground, Wildlife Garden. The children were also planting bulbs in different areas of the school.



LAST TERM DEUGLIE WON THE HOUSE CUP!! (By Lucy Milne and Afton Learmonth)

They won by gaining the most House Points in a term! It was close with every House wanting to win

#1 Deuglie #2 Duncrieve #3 Fordel #4 Arngask

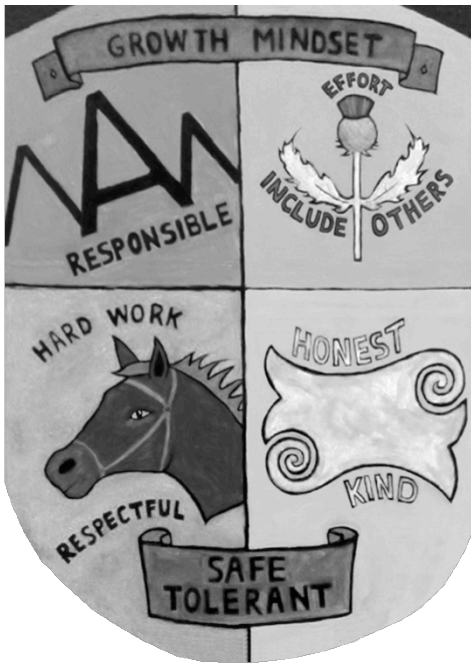
Deuglie chose as their reward to come to school in whatever clothing they liked. From onesies to pink frilly dresses Deuglie members would be seen all over the school!! We all wonder who will win next term??



ROOKIE ROCK STARS

By Lucy Milne and Afton Learmonth

Rookie Rock Stars are a charity that goes around different schools and teaches pupils songs with a moral message. All the children were very happy and excited when they came back and it definitely brought a real happiness among them. We hope they'll come back again.



SCHOOL BADGE

We worked together to review our values with all our pupils, staff and parents. Pupils want to display our values on our school badge. Pupils worked together to paint a canvas to display our values.

Ways To Earn House Points

The House and Vice Captains meet regularly with Mrs Lyon to discuss ways to improve learning and life at Arngask. They suggested having a Points Chart for all staff to use so that points could be given fairly to pupils. The House and Vice Captains created

a draft list of ways to earn House points. They then asked pupils and staff for their feedback. The finalised list below was shared with all pupils at assembly and is now on display across our school. Great Work House and Vice Captains!

Helping a teacher at lunch	X5
Growth mind-set	X3
Ways to wellbeing	X3
Saving electricity	X1
Showing a responsible/caring attitude	X2
Good work	X1/2
Certificate at assembly	X2
Playground award	X5
Volunteering in the playground	X2
Line points	
Litter picking/watering plants or helping maintain school grounds	X2
Good behaviour or setting a positive example	X1/2

Primary One Writing

The Magic Key

'The Magic Key' written by Bella McKenzie-Mills

Suddenly the box glowed and there was a key. Biff and Chip went to a dark forest. There were lots of bugs. They saw lady bugs. There was a beetle.

'The Magic Key' written by Alistair Duncan

Biff and Chip found a box with a glowing key inside. Then they opened the box.

'The Magic Key' written by Iona Angus

Biff and Chip went to a rainbow with a magic key and they got candy floss. They slid down the rainbow.

Cross Country (By Lee Scott)

P6/7s went to the field at Kinross High School on the Wednesday 6th February to compete in the Cross Country event. P6 girls ran first. Jessica Sloan came in at 4th and Ava Harrison just missed a place in the top ten. Jack Johnston came in 6th for the P6 boys. Lucy Milne and Afton Learnonth just missed a top 10 place for the P7 Girls coming in at 11th and 13th. Lee Scott and Josh Porter just missed a top 10 place coming in the top 15. Sadly no P7s got a place but came very close,

Well done to our top 10 P6s and everyone who came along and ran on the muddy track.

Our Learning This Term (By Suliven Harris)

P6/7's topic is WW2

P6/7 are learning about Evacuations

P4/5/6's topic is Space Explorers

P4/5/6 are learning about animals in space and timelines

P3/4's topic is Polar Regions and Explorers

P3/4 are learning about what lives in the polar regions.

P1/2's topic is Space

P1/2 are leaning about the solar system

Chinese Knot Tying (By Joshua Horsman)

Lily and her son Aiden came in to do two workshops with P4/5/6 and P6/7 on how to tie Chinese Knots.

AVON CALLING!

*37 years and still
DING DONGing in Glenfarg!*



*Many thanks to all my customers, past and present
Cosmetics, toiletries, perfume, gifts
delivered to your door*

I can deliver a brochure, or you can go to
www.janmakeup.co.uk,
place your order and choose whether to have it delivered direct
(for a small fee) or for free by me.

If you would like me to call, or for more information, contact

Jan Macpherson, Lyndhurst, Ladeside
01577 830430, 07709 015305
jan@janmakeup.co.uk

FERRIER & MACKINNON

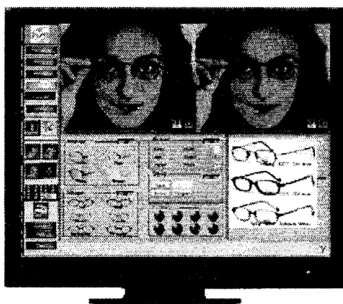
OPTOMETRISTS

74 High Street, KINROSS KY13 8AJ Tel: 01577 864 009
27/29 Chalmers Street, DUNFERMLINE KY12 8AT Tel: 01383 721 502

We are a family firm of Optometrists dedicated to professional, quality eyecare.

Introducing our new

FRAME
IMAGING
SYSTEM



SEE YOURSELF
WEARING A FRAME
BEFORE YOU
ORDER ANY
SPECTACLES!

WHY NOT POP IN FOR A
DEMONSTRATION - WE
WOULD BE PLEASED TO
SEE YOU.

Opening hours: Monday to Friday 9.00am - 5.30pm
Saturday 9.00am - 5.00pm



'Not One Less' is a film based in rural China.

The village schoolmaster has been called away to his dying mother's bedside and Wei Minzhi, a 13 year old girl, volunteers to fill his post until he returns.

The Schoolmaster is not keen for her to cover his post as she is so young and with no experience but no one else is showing an interest in the job. She gets strict instructions, because the school's subsidy depends on its head count, she is to return the full class to the teacher 'Not One Less'.

This could be a real drama for Chinese viewers as many children drop out of school every day. The Director 'Zhang Yimou' has sometimes got himself in trouble with the Chinese authorities because of his films but he does not with this one.

What is particularly interesting about this film is that the actors are not professionals but local people playing characters using their own names. Wei Minzhi plays the role very convincingly. This is a moving film about the determination of a young girl. It has a serious theme but some charming and funny moments. Here are the results of the voting for the previous movies

Month	Film	Awful	OK	Good	V Good	Fantastic
Dec	Rare Exports	14%	59%	18%	4.5%	4.5%
Jan	Edie	0%	0%	3%	34%	63%
Feb	I Love You To Death	3%	9%	21%	67%	0%

Friday 19th April Back by popular request is the silent movie night. Featuring Dave Watt on piano the movie is '**The General**' starring Buster Keaton. It was inspired by the Great Locomotive Chase, a true story of an event that occurred during the American Civil War. The story was adapted from the memoir The Great Locomotive Chase by William Pittenger. The General is now often ranked among the greatest American films ever made.



Before the Community Cinema's February film, Janet Watson made a presentation on behalf of the committee to one of our founding members. Margaret Ponton was stepping down from the committee after seven years. Margaret had been present at the very first meeting, when a few locals got together to throw around ideas for starting a cinema in the village hall. Over the next seven years, Margaret kept us going with her enthusiasm, played a leading role in fundraising for our equipment, came up with brilliant ideas to make our programmes more interesting and cooked for those popular supper plus film nights. She is now taking a well-earned rest from all these roles but I'm sure we will still be seeing her at the cinema.

GLINFARRE AND DUNCRIVIE IN BLOOM



My wee sad tale in the last newsletter about the ageing elves obviously didn't touch the hearts of the potential volunteers that GDIB so desperately need. So in this issue I'm resorting to my blunt approach - if the younger members (under 60s) of this community don't start to involve themselves in maintaining our environs, Glenfarg & Duncrивie will very quickly return to the scruffy streets of pre 2005, a time when there was not a floral display to be seen in the village, a time when the dykes were overgrown with weeds, a time when Main Street features were a dumping ground at the North end, a broken down wall by the school and overgrown verges at the South end. Maybe these photos will stir some of you into action. Contact Irene or me and offer some help.



Friends Of Wallace Park

Plans are progressing for improvements to Wallace Park, but the Friends of Wallace Park group would like to involve the whole community at every stage. Remember, it's your park. How can you play a role in its development? Well, there are a couple of events planned in the next few months.

Open Meeting

19th March, 7.30pm in the Village Hall meeting room.

It is hoped that the PKC landscape architect will be in attendance to discuss drawing up the plan for the park, which will then be used to seek the necessary funding. Come along and have your say about the development of the park.

Volunteers Day

Saturday 27th April

Come along to the park any time between 10am and 1pm. Bring the kids. Refreshments will be provided. We plan to complete the improvements to the sun clock and carry out other necessary maintenance.

Since FOWP began, we have weeded the sun clock, tidied neglected areas, built insect houses, installed a temporary notice board, had the park's entrance gate painted, worked with the CC to get the wooden animals repaired. We are constantly in contact with PKC about their plans in the park.

As a resident of the Glenfarg area, you are automatically a Friend of Wallace Park. If you would like to be more involved or have ideas about what needs doing, please contact us at -

fowp@glenfarg.org

STOP PRESS: We're not wishing for bad weather but if we do get enough snow, look out for details of a snowman-building competition in the park.

GLENFARG ARTS PROJECT

Calling all local artists - it's time to get painting, crafting or photographing again. The Glenfarg Art Exhibition is approaching. Put the date in your diary -

4th & 5th May in the Village Hall

Mark in the shop can supply you with the entry form. Or email him at glenfargartsproject@gmail.com

Glenfarg Arts Project will handle all the sales for you, and just take a small commission to cover the running costs. Entries must be returned by 14th April.



Art Lovers - get along to the village hall and be amazed at the hidden talents of your neighbours.

Saturday 12 to 5pm Sunday 10 to 4pm

An entry fee of £2.50 (children £1) includes the price of refreshments. Enjoy the tea, coffee and cake while you admire the paintings, photographs and craft work around you.

Glenfarg W.R.I.



Thursday the 13th December was our Christmas buffet which was provided by all the members. Afterwards we enjoyed entertainment by Lesley, one of our own members.

Competition Results

Christmas tree Decoration--1st Jeanie Black, 2nd Margot Moran, 3rd Allison Messenger

3 Assorted Sweets-- 1st Alison Harrison, 2nd Margot Moran, 3rd Lynda Stuart.

Flower of the Month-- 1st Allison Messenger, 2nd Margot Moran, 3rd Alison Harrison.

At the start of our meeting on the 10th January we were entertained by Steven Kennedy and Katie, Jessica, Joshua, and Suilven, 4 pupils from Arngask School on the chanter and Bagpipes. Afterwards, Alison Harrison, one of our own members, demonstrated how to make a Sugarcraft posy.

Competition Results

Piece of Handmade Jewellery--1st Sheena Chisholm; 2nd Jeannie Black; 3rd Margot Moran.

3 Biscuits--1st Lynda Stuart; 2nd Liliias Johnston; 3rd Helen Quartermaine.

Pot Plant--1st Liliias Johnston; 2nd Liz Yull; 3rd Helen Quartermaine.

On the 14th February our speaker was Peter Dickson who gave a talk and showed slides on the origins of Stationery Binding.

Competition results

Bookmark--1st Margot Moran; 2nd Helen Quartermaine; 3rd Alison Messenger.

Flask of Vegetable Soup--1st Allison Messenger; 2nd Liz Yull; 3rd Margaret Scott

Flower of the month--1st Margie Davidson; 2nd Liz Yull; 3rd Vivien Hepplethwaite.

Dates for Future Meetings-- Visitors Welcome

14th March: Faberge Eggs by Deonaid Wilson.

11th April: Napkin Art by Lynda Stuart.

9th May: A.G.M. and Three corners.

22nd March: Fundraising Concert for our centenary Celebrations in 2020. In

the village Hall at 7pm. Entry by Programme only Adults £10 includes a glass of Wine Children £5 . Contact Margaret 830369.



Glenfarg Tennis Club



Welcome- if you are new to Glenfarg or a new member to the Glenfarg Tennis Club.

Nearly time for the tennis to get started in Wallace Park, and with so many changes of personnel in the village, it might be a good time to give some details about the club. Glenfarg Tennis Club, founded in 1926 (5 years after Leeds United) is a community run club for the whole family. There is always a host of activities happening at our busy and friendly tennis club and this can be found on the Glenfarg Grapevine, but we also have a Glenfarg Tennis Club website (glenfarg.org) and a Facebook page. You can always ring me on 830879 for more info.

In recognition of our close relationship with Stephen Homes who have built the new houses at Copperfields, anyone new to the village can have FREE MEMBERSHIP FOR 2019 just by ringing 830879, coming down to the club on Wednesday night, or collaring a committee member in the village. This 'close relationship' has resulted in improvements to the clubhouse, brought about purely due to Stephen's generosity and kindness. They have rerouted our electrical supply so that the metering point is now in the clubhouse and also fitted the infrastructure so that we are connected to mains water and sewage, and will soon have reliable supplies of both.....well.....?

Welcome to the 2019 season- to existing members. It is that time of the year when membership fees are due. The club also has a social member category, for friends of the club who want to enjoy the social events and club-night banter without the need to actually play tennis! See below for details of fees and bank transfer information. Members please complete the form with up to date contact details.

Please note that for Safeguarding reasons, children under 12 are not allowed access to the clubhouse unless accompanied at all times by someone over 18 years old. For this reason, the code on the club door has changed and is available to members when they renew.

Weekly activities commencing April 2019

Monday: Womens doubles from 7p.m.

Tuesday: Children and Young People's coaching at 4:30 and 5:30p.m.
Adult coaching starts at 6:30p.m.

Wednesday: Clubnight from 7p.m. Friendly Mixed Doubles

Thursday: Mens doubles from 7p.m.

League tennis

Once the season starts, we will be entering:

Ladies 6 player league: Contact Tara Winterton on 830879 / taraw@talk21.com

Mens: 6 player league: Contact: Mervyn Cooper 07971 189201 / mervyn.cooper@rautomead.com

Club Championship tournament: aiming to run and complete ladies/ men/ mixed matches during the summer with finals in September.

Membership Fees:

Visitors: £3.50(adults)/£2.50(children) / session for use of the courts.

Honesty box situated at the side of the club house.

Matches (home/away): £2/match to cover balls and lights. Costs of teas/ transport to be shared.

Lights: £2 each player/ court/ session. Tokens and money box in clubhouse
Cost of lights for club coaching sessions: covered by club

Glenfarg Tennis Club Committee and contact email

Chairperson: Tim Corcoran timcorx@btinternet.com or taraw@talk21.com

Treasurer: Alex Swanson alex@braefauld.plus.com

Secretary: Pierette Melville melvillepierette@gmail.com

Match Secretary: Mervyn Cooper mervyn.cooper@rautomead.com

Committee Members: Andrew Stewart, Charles (Chaz) Young, Nicky Nicol

COACH: Chris Currah Currah91@hotmail.com

Annual Membership

Membership Categories:

Under school age	Free	Primary school children	£10
Secondary School children	£25	Students	£30
Over 65 (1 Jan 2019)	£40	Adults	£65
Family (2 adults + children)	£155	Social membership	£10

It is possible to pay directly into our bank account by BACS transfer

Account name: Glenfarg Tennis Club,

Account number: 00210512

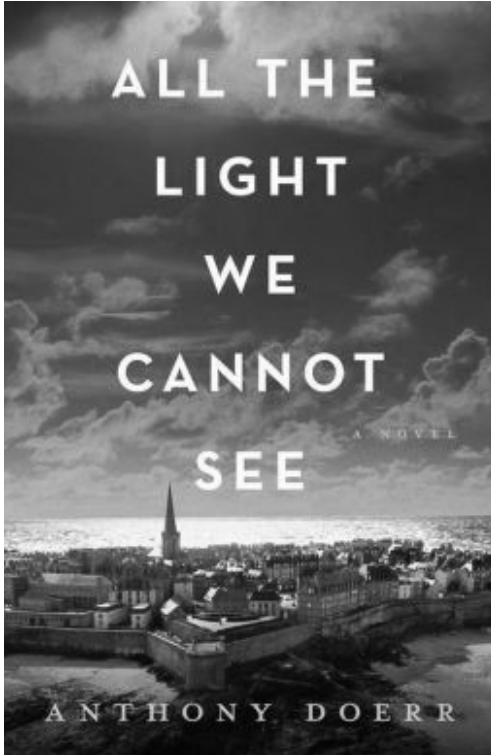
Sort code 832347

Alternatively make cheques payable to: Glenfarg Tennis Club and post to Alex Swanson, Braefauld, Duncricvie, Glenfarg. PH2 9PD

Once completed, please ensure your British Tennis membership details are up to date, linked to the Glenfarg venue and "Opt In" on line if you would like the chance of Wimbledon tickets in this year's ballot. Start by going to <http://www.ita.org.uk/> .

Book Review

All The Light We Cannot See by Anthony Doerr

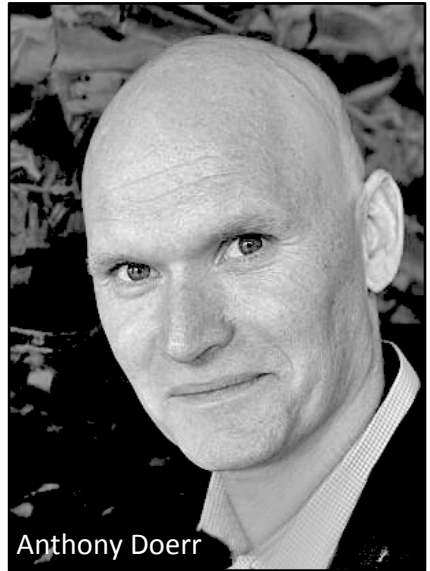


This delightful book set in France and Germany in the lead up to and during World War 2 tells the story of two children growing up in that period. Marie-Laure lives in Paris with her father who is a locksmith and keeper of keys at the Museum of Natural History. Hidden in the vaults of the museum is a cursed gem, a grey- blue sea diamond 'The Sea of Flame', with a red hue at its centre. Marie-Laure goes blind at the age of six from a degenerative eye disease. Her father builds a

scale model of their neighbourhood and Marie-Laure learns how to find her way around by constantly tracing the streets and buildings with her fingers. She learns how to read in braille and devours copies of 'Around the World in Eighty days' and 'Twenty thousand leagues under the Sea'. When the Germans invade Paris, they are forced to flee to the coast taking 'The Sea of Flame' gem with them. They seek refuge in the house of a reclusive great uncle who lives in St Malo. Marie-Laure's father begins another scale model of St

Malo so that she can navigate her way around the city. The model and the diamond become part of the whole story and of her survival.

Werner, an orphan, grows up in a children's home with his sister Jutta in a coal mining area of Germany. They build a radio from parts which they find and eventually are able to listen to a nightly science program broadcast from France. Werner is inspired by these broadcasts to study and becomes expert at fixing



Anthony Doerr

radios. His achievements win him a place in a Hitler Youth Academy. It is his only chance to escape from the grinding poverty of life in the orphanage. When he eventually joins the army he is sent to track radio transmissions across Russia and Central Europe. His experiences are bleak. He is eventually sent to St Malo where Marie–Laure's uncle uses his radio to transmit messages for the Resistance.

'The Sea of Flame' becomes an integral part of the story at this point. A German officer who is suffering from cancer believes that the stone can cure him. He goes on a mission to track it down. The story culminates in the bombardment and almost complete destruction of St Malo by the US Air Force.

This is a long book, which is balanced by the fact that chapters are short and the story flits from one character to another thereby keeping your interest. It's a story of triumph over adversity. One which I'm sure you will enjoy.

Lochelbank Wind Farm Fund

In the December issue of the Newsletter, we printed an article on the Lochelbank Wind Farm Fund and promised to update you on the distribution of the fund in 2018.

Here are the details of grants awarded in the Glenfarg area.

GDIB £2500

To purchase planters and hanging baskets.

GCC £1162

To provide a fund for distribution in Glenfarg in the form of micro grants for individuals and groups, up to a maximum of £250 for general charitable purposes.

Village Hall £12,060

To contribute to the purchase of the adjacent schoolhouse to form a community centre.

TOTAL £15,722

In the same period, £12,969 was distributed in the Bridge of Earn area as follows -

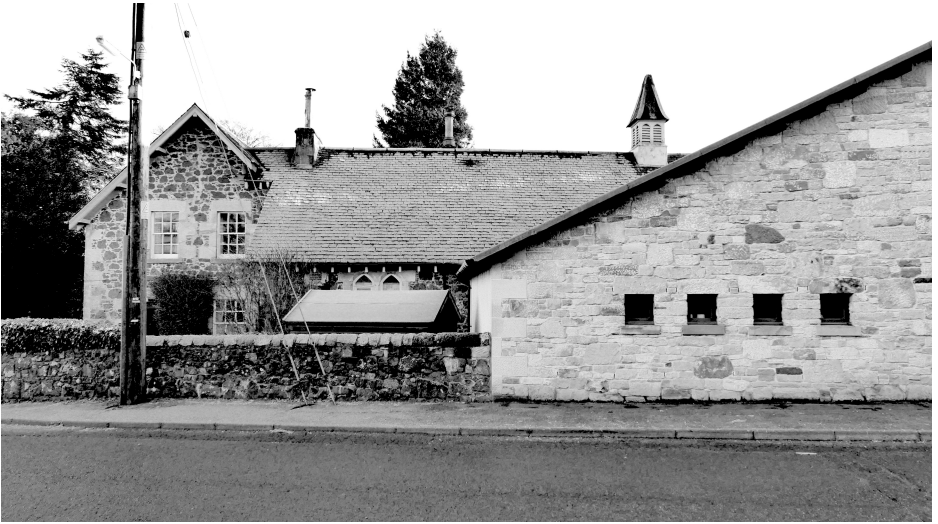
Bridge of Earn Bowling Club	£3,535
Bridge of Earn Institute	£8,384
Forteviot Village Hall	£300
Bridge of Earn Institute	£750

Deadlines for new applications

- 12 June 2019 (for consideration mid August)
- 11 September 2019 (for consideration mid November)

Download an application form from Foundation Scotland
www.foundationscotland.org.uk/programmes/lochelbank.aspx

The Village Hall Developments



Ever since the closure of the Glenfarg Hotel three years ago, the village has lacked a place to meet informally, socialise, have a coffee or bite to eat. The creation of a community centre could be such a place. It could also offer space for clubs for the young and old alike and perhaps shared office accommodation as well.

The Village Hall has now successfully raised the money to purchase the former Schoolhouse that adjoins the hall. The money for the acquisition will come from the Scottish Land Fund and RWE Innogy (the windfarm at Lochelbank). The Hall Trustees hope to be able to complete this acquisition very shortly.

Once this is done, an open day will be held to which all will be invited. There will be an opportunity to visit the Schoolhouse and share ideas as to how it might best be brought into use for the benefit of the whole community. The date for this will be advised.

This is an exciting opportunity for our village! We hope that everyone will wish to give their help and support as the project moves forward. There will be plenty of opportunities for groups and individuals to lend a hand to make this a success - and to make a big difference to Glenfarg.



Glenfarg Village Store

More than just a your local shop.

We sell tickets for all of your events along with your raffle tickets and your newsletters. We always donate to your events and fundraisers. You can rely on us take in your deliveries, act as a collection and drop off point. We hold your keys, display your posters and questionnaires, provide information and telephone numbers and pass on your messages.

We are happy do all of this and more.

You can always rely on our continual support, but please remember we need your support just as much. It takes a little bit of effort, but, if you don't try to buy local, then there won't be anything local left.

**Mon. to Fri. 7am to 7pm, Sat. & Sun. 9am to 7pm
Tel: (01577) 830 201**

GLENFARG COMMUNITY CINEMA

present
the classic silent movie



Live music by Dave Watt
Friday 19th April 2019
Glenfarg village hall 7.30pm

Tickets £7

Supported by PRS for MUSIC





Cycling Round Lochleven





Remembrance day morning the cubs and scouts met at Burleigh Sands at 10 o'clock in the sunshine. They headed off noisily racing each other on the route. At the first stop they compared their mud splattered backs, deciding that Archie was the best.

They continued round, stopping at the view point over the loch, holding their own eleven o'clock 2 minute silence there, much to the surprise of some passing locals. By the time the riders were back at Burleigh Sands the weather had deteriorated into a slight drizzle. It was fortunate that the cyclists had been out in the best part of the day.

Christine Morton

The Therapet Scheme

A fair number of people in the village already know that our handsome Golden Retriever, Craggan, is a Therapet.

I'm sometimes asked what it takes for a dog to become a Therapet, so this article should give you all the information you need if you think your own dog might be suitable and you are interested in becoming a Therapet volunteer.

There is more than one scheme that provides therapy dogs. Three years ago, I contacted an organisation called Canine Concern Scotland Trust who run the Therapet scheme as I had known someone previously who was a member of that scheme.

A friend of mine was then the manager of a care home in Kirkcaldy and so I already had somewhere in mind to visit with Craggan when I joined up. However, don't worry if you don't have anywhere particular lined up for visits as the organisation frequently receives requests for visits and can help you find somewhere suitable.

Once I had made the initial contact, a visit was organised for one of the area reps to come to our house for a visit. From the minute they arrived they were observing Craggan's behaviour. How did he react to their arrival, how quickly did he settle down, how well did he respond to any commands I gave him etc. They had come prepared with a checklist with various criteria about Craggan's behaviour and character and he would have to pass the assessment to be allowed to work as a Therapet. Over a coffee, I found out more about what's involved in Therapet visits, what's required of your dog in terms of health and so on and what's expected of you as a volunteer.

Luckily, Craggan passed the assessment with flying colours and we soon started our visits to the care home, once my PVG check had come through. His monthly visits were very popular and our friend even took him in every day when we were on holiday as she was looking after Craggan while we were away.

There were several residents of the care home who used to have dogs of their own and they loved having a dog around to cuddle and stroke and it brought back happy memories for them. He also brightened up the day of the residents who had dementia. Every time they saw Craggan was like the first time they had met him and one lovely lady would come out with the same comments each time I visited – "He must take a lot of brushing. He must take a lot of feeding!"

After a year of working with adults you can apply for your dog to work with children.



This involves another home visit to assess the suitability of your pet to be with children, and another checklist to be filled out with a new set of criteria. Craggan passed again, as I had hoped he would. He's known for having a very calm nature and we had already noticed how good he was around children, particularly young ones who were not much taller than him.

We then started to visit Rachel House where he has proved to be really popular, not just with the children who are staying there but their brothers, sisters, parents, other volunteers, and Rachel House staff. He cheers everyone up and everywhere we go, people want to stop and pat him and he just laps up the attention. It's such a rewarding volunteer role to have, I love seeing the benefit that children and adults get from having Craggan around them.

I'm often asked whether there is any special training for Therapet dogs. The answer is 'no', it depends largely on your dog's nature, how they behave, how they react to people etc. So you can't really train any dog to be a Therapet, they're either suited to the role or not. You are given guidance, of course, on how to conduct yourself and your dog during visits, making sure the dog receives the necessary checkups from the vet, is kept in good health, and is clean and tidy when you take them to visit.

There is another scheme run by the same organisation which involves dogs sitting with schoolchildren when they are doing their reading practice. Reading out loud to a dog seems to be less stressful for children who may struggle with reading out loud and it has proven benefits.

If you are interested in finding out more about the organisation or in registering to get an assessment visit for your dog, you should contact:

Canine Concern Scotland Trust, 81-85 Portland Street, Edinburgh, EH6 4AY, Tel 0131 553 0034



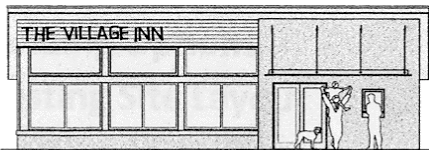
Earnside

***U.K. & Continental
Travel***

Tel: 01577 830360

E mail: info@earnside.com

Website: www.earnside.com



Background

It has been more than 3 years since the closure of the Glenfarg Hotel. At the time there was a huge local outcry which ultimately resulted in the formation of a Community Company which aimed to bring the hotel back under community ownership. Despite many approaches and representations to the local authority and the owners of the hotel, planning permission was granted for a change of use to flats in April 2016.

The Company continued to pursue a wide range of Initiatives to find a way of keeping the hotel but it became clear that this was not achievable and that an alternative social venue was the only realistic option.

Current Position

Following ongoing consultation within the local community and a lengthy and sometimes difficult process, the Company now has a realistic alternative to bring back most of what was lost, through the development of a Village Inn at an alternative location on the High Street. This would be a licenced facility serving food and bar snacks in an environment similar to other village inns where the whole family would be welcomed.

The Company has developed a proposal which to date has received outline planning permission and our final hurdle is to secure the project funding. Positive discussions have been held and we can report there is light at the end of the funding tunnel and we are hopeful that we can present the proposal to the community very shortly.

WATCH THIS SPACE

For further information contact David Aird 830370
secretary@glenfargcommunityco.co.uk

Social History Project

Robin Watson and I continue to collect bits and pieces relating to the social history of Glenfarg and are now planning the next stage of presenting our finds to a wider audience. As you know there are now some old photographs displayed in the Village Hall and there have been several articles in the newsletter. Many of you will recall the Cinema showing of the interviews with Mrs Scott (first Dux at Arngask Primary School), Mrs Roe (who recently celebrated her 100th birthday) and Stewart Smith Snr. (who has lived all his life in Glenfarg). Up to now, Robin and I have concentrated on the time up to the loss of the railway and the advent of the M90.

We are now about to start interviewing the "newbies" of the '70s when the developments of Lomond Bank, Birch Lane, Ash Grove and Elm Row almost doubled the population and increased the school roll likewise. There will certainly be plenty of memories to share there!

To whet your appetite here's a wee photo of part of the field which is now Birch Lane, Ash Grove and Elm Row; another of Greenbank Road as was; and golf at one of two golf courses in Glenfarg at that time.





What we all need to remember is that the '70s will very soon be 50 years ago - yes 50 years ago. How time flies when you're enjoying yourself, and yes we did enjoy ourselves in the 70s, a time of great fashion (tartan trimmed Bay City Roller trousers), a time of great music (a young Michael Jackson "Rockin' Robin"), a time when Scotland went to Argentina to bring back the World Cup, a time when Glenfarg had 2 pubs, a time of power cuts and 3 day weeks, a time of inflation between 10% and 26% and a time when the UK joined the EU. Yes the 70s was a very interesting time.





Scouts and Cubs Curling

Gary organised a curling taster session for the Sunday before Christmas, engaging Wendy to pass on some of her expertise too. The cubs and scouts were divided into two groups, one at each end of the rink to learn how to release the stone without falling over. Gary and Wendy ensured that the stones didn't travel too far.

Soon the cubs and scouts were sent to collect brooms to try sweeping in front of the stones. They soon discovered that sweeping and moving fast enough to prevent the stone hitting the broom was harder than they expected. Gary and Wendy did explain how to get the stone to curl.



Once the cubs and scouts had an idea of what they were meant to be doing, the two groups had a competition. The winner was whichever team managed to get a stone into the house, much harder than expected as for some ends none of the stones stayed in the house.

After the competition the cubs and scouts adjourned to the bar to watch the local experts competing.

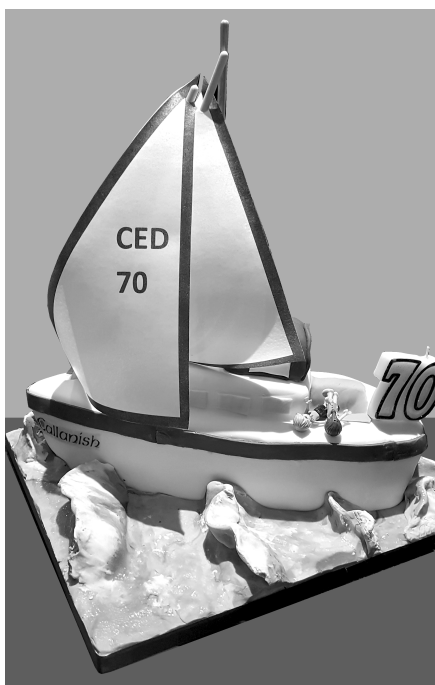


A Tale Of Two Yachts

In January 2018, Heather Wilkins contacted me about making a 70th birthday cake for her husband, Ced. I became slightly concerned when I found out that it was to be modelled on his yacht, never having made a nautical-themed cake before.

Heather kindly supplied several photos of the actual boat so that I could model the cake as near as possible to look like the real thing. No pressure then!

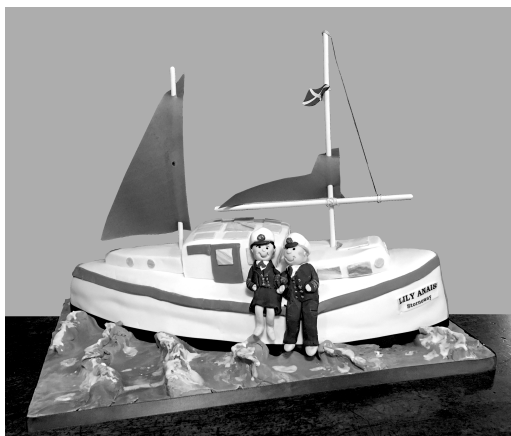
I went to Google right away to search for ‘yacht cakes’, something I often do as a starting point when asked to make a type of cake that I’ve never attempted before. Doing this often gives me ideas about the structure, materials and method to use to create a 3D cake like this one. Occasionally you might even find a Youtube video that another cake maker has filmed, on the type of cake you’re looking for, but unfortunately not in this case! I did, however, find an online tutorial on how to make a ‘wave’ effect from icing, courtesy of Lindy Smith (no relation!) who makes the most amazing cakes including one of a whale, thankfully, on a setting of ocean waves.



The shape of the yacht was a simple carving exercise, working out first of all what sizes of cakes to bake and then making a paper template for the shape to be cut out. It took a while to come up with a solution for the cake – the mast was a white cake dowel, normally used as an internal support for tiered cakes. The sails were made from edible wafer paper, which I had printed with blue edges and some appropriate lettering. I don’t have an edible ink printer myself but there are several companies online who offer an edible ink printing service (I use ‘Eat My Face’).

It was certainly a tricky cake to make but Heather and Ced were pleased with the end result and sent me several photos from the party.

Out of the blue, a couple of weeks after making Ced's cake, I received an email from a gentleman who had found my cake business from an internet search. He was Scottish but worked in Saudi and wanted a surprise cake for his bride-to-be for a family wedding celebration at a big country house near Alyth. He wanted the cake to be based on his own yacht and supplied me with a number of photos and information about the main points of the yacht's structure. I couldn't believe that I was being asked to make another yacht cake so soon after the first one!



I must say that I was so relieved that I had already made Ced's cake or I might have been seriously stressed about making a yacht cake for a wedding, especially when it was going to be a surprise for the bride. In the end, I never met Norman Campbell who ordered the cake. We dealt with all the details by email which is unusual, but everything actually worked out OK.

His bride was suitably surprised on the day and their weekend of celebrations went very well. They kindly commented "Your own special cake is up there with our favourites and we would both like to thank you so much for the lovely cake, realistically and tastily made."

I hope that the new Mrs Campbell noticed the subtle detail in the uniforms of the figures I had made to sit on the edge of Norman's yacht. He had asked that his figure should have three stripes on the sleeves, so representing a First Mate, and the figure of his bride should have four stripes, as would befit a Captain. He had commented that this would be a good way to start off married life!

There have been no further yacht cakes ordered since these two. I would never have thought when I first started making cakes that I would ever be asked to model any on yachts and I'm still amazed at some of the requests that I get. What will be the next unusual commission? Keep reading these articles to find out!

LEIGH SMITH CAKES



Bespoke Cakes with a 'Wow' Factor



View cakes and cupcake bouquets at
www.leighsmithcakes.co.uk and on
Facebook 'Leigh Smith Cakes'

To avoid disappointment, please allow at least one month's notice for celebration cakes, although I will always try to accommodate requests where possible.

Divach House, Main Street, Glenfarg

Tel: 01577 830256 Email: info@leighsmithcakes.co.uk
07814 239142

Running for Charity



Richard Ibbotson, seen here on the last lap of his mile a day in 2018 challenge, has managed to raise around £600. This has gone to 2 charities, the Dogs Trust and Smile Train (which funds cleft palate repairs in developing counties) This year's challenge is to run 500 miles (A Proclaimer!) And a friend in Glasgow is going to run 500 more!



Glenfarg Folk Club



SANDY STANAGE and FRANK McGUIRE

Monday 4 March

Members £6; Non-Members £9

A firm favourite at the Club, Sandy Stanage (founding member of Kentigern) is one of the finest virtuoso finger style guitarists in the folk scene, accompanied this evening by singer and highly skilled percussionist Frank McGuire. Their mastery of their craft, spanning a range of genres and styles, ensures another brilliant night.

SINGAROUND

Monday 11 March

All £2

With just over a week to go to the 'International Day of Happiness', this is your chance to lift our spirits with 'cheerfulness and good humour' being the theme tonight.

RALLION



Monday 18 March

Members £6; Non-Members £9

Rallion are a three piece contemporary folk group, hailing from Glasgow and Perthshire, and bringing a wide range of musical influences together to create their powerful persuasive music. Their unique sound is based around the fiddle powerhouse of Fiona Cuthill, the distinctive voice of Marieke McBean, and the virtuoso guitar and bouzouki playing of Stevie Lawrence.

OPEN MIC

Monday 25 March

All £2

Dim the house lights. The stage is yours. Tonight offers the chance to showcase your talents to the full, and to perform with complete PA system before a very supportive and appreciative audience.

JOSIE DUNCAN and PABLO LAFUENTE

Monday 1 April

Members £6; Non-Members £9

Winners of the 2017 BBC Radio 2 Young Folk Award, this vocal/guitar duo, like no other, have taken the folk scene by storm over the past two years. Josie's crystal clear voice, accompanied by Pablo's wonderful guitar skills, will leave you in no doubt as to why they are in such high demand. Don't be an April Fool and miss this.

POST-FEAST RECOVERY SINGAROUND

Monday 8 April

All £2

Wind down with our customary recovery evening after the Feast with songs, banter and memories of the weekend's festivities. There's no theme tonight. Whether you sing the roof off or perhaps take a more subdued line..anything goes.

RISKY BUSINESS

Monday 15 April

Members £6; Non-Members £9

Take three excellent musicians, a diverse range of traditional and original songs, great guitar and banjo playing, tight harmonies and some engaging patter and you have Risky Business, comprising Ruth and Ken Powell, and Dave Walmisley, and the formula for another grand night at the Green.

STEVE TURNER/FANKLED

Monday 22 April

Members £6; Non-Members £9

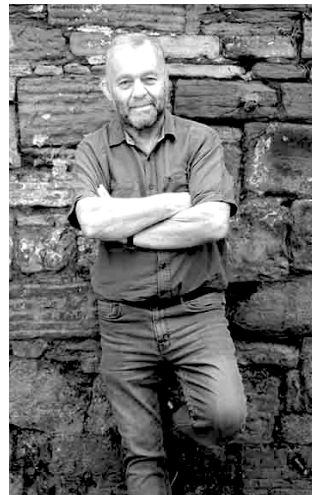
We continue to spoil you with a great double-header tonight, featuring Steve Turner -- concertina/cittern/mandolin/ banjo maestro and one of the best voices in the business. As though that were not enough, we also welcome Tom Proctor and Roy Murray of Fankled, who make a return visit with their strong vocals and accompaniment for their mix of self-penned and traditional songs.

SINGAROUND

Monday 29 April

All £2

April is a confusing month: rainy and wet one day, sunny the next, but offering the warm promise of some green shoots. So 'weather' or its effects is the theme this evening. As ever, however, you can always leave your sou'wester at home and sing whatever you fancy. All welcome.





Remedial, Sports Injuries & Aromatherapy Massage

Bodyworks Clinic in Glenfarg

Providing specialist soft tissue massage treatments to help:

ease aches & pains
injuries and mobility restrictions
stress, anxiety and depression
as an integral part of a training programme
relaxation and 'Me' time

Gift vouchers available

contact Yvonne on 07801 225 944

www.bodyworkscotland.com

email: info@bodyworkscotland.com



**A Glenfarg based dog exercise service offering dog walking
and for more energetic dogs, jogging and biking sessions**

call Yvonne on 07585 060 663 or email info@tailsandtrailsglenfarg.com
visit us at www.tailsandtrailsglenfarg.com or find us on Facebook & Instagram

AUSTIN HEATING & ELECTRICAL

Boiler Servicing and Repairs - OIL, GAS, LPG & ELECTRIC

Aga / Rayburn Servicing & Repairs (Rayburn Guild Engineer)



Registered
Business



Call - 07786 705261 or 01577 861188
No Call-Out Charge

www.austinheat.co.uk



VETERINARY SURGEONS

CAMERON & GREIG MRCVS

'Ardmhor', Stirling Road, Milnathort KY13 9XR



By appointment only

Monday - Friday

9 - 10.00am

2 - 3.00pm

6 - 7.00pm

Saturday

9 - 10.00am



Telephone: Kinross 863 494
Website: www.cameronandgreigvets.co.uk

*Large and small animals
24-hr emergency service*

ANDREW MILLER FIREPLACES



Bespoke & personal service

SUPPLY or SUPPLY & INSTALL

GAS / ELECTRIC / MULTIFUEL / WOODBURNING STOVES

**GLASS / GRANITE / SLATE / TILED HEARTHES TO SUIT
STOVES or FIRE SURROUNDS**

GAS / ELECTRIC / FIRES / SUITES

**LARGE SELECTION OF VARIOUS TIMBER and PAINT FINISH
FIRE SURROUNDS / BEAMS and SHELVES**

GRANITE / LIMESTONE / MARBLE / FIRE SURROUNDS

SHOWROOM by APPOINTMENT

27-29 WESTERLOAN

MILNATHORT

KY13 9YH

Email: millerfireplaces@btconnect.com

Tel 01577 862173

Mobile 07870 284868

Silver Lining Hair Studio

Ladies, Gentlemen, Children, Students, Seniors

Bridal Hair a Speciality

Kebele ADVANCE Specialist

Upstairs at Jamesfield Centre, (Lift available)

Perth Road, Abernethy, KY14 6EW

Telephone: 01738 851110

(Walk In Customers Welcome)

Send a message via Via Facebook or Instagram – typically replies
within an hour

www.silverlininghairstudio.uk

KVG/ROS

VOLUNTEER DRIVERS

Our main Fund Raising event this year will be our annual concert

GORDON MENZIES and Friends

Milnathort Town Hall 16th March 2019

7pm for 7.30pm start ----- BYOB

**Tickets £10.00 available from David Aird 01577 830370 and Sandy
Smith 01577 862536**



HENDERSON

PLUMBING AND HEATING

Henderson Plumbing and Heating, based in Glenfarg, provide a professional and reliable service.

- *Full Bathroom Renovations
- *Central Heating systems
 - *Biomass systems
 - *Drainage
- *General maintenance
- *Traditional Cast iron rain water gutters
 - *lead work

Mobile. 07703 735925

hendersonplumbingandheating@outlook.com





Gain a clear perspective on your financial future

Proud to support Glenfarg Tennis Club

▶ We provide a comprehensive wealth management service, offering specialist face-to-face advice tailored to you. Our services include:

- Investment Planning
- Retirement Planning
- Inheritance Tax Planning
- Intergenerational Planning

For further details please contact:

AS Wealth Management

Mob: 07970 668515 | Email: andrew.stewart@sjpp.co.uk
www.as-wealth.co.uk

THE COFFEE LOUNGE

IN THE VILLAGE HALL



THURSDAYS 10AM TO 12AM

Give your feet a Treat



Private podiatry/chiropractic in
the comfort of your own
home.

H.P.C. Registered

Lisa Allison BSc Tel 01577 830678

GLENFARG COMMUNITY COUNCIL

MINUTES OF MEETING

Monday 7th January 2019
Glenfarg Village Hall

PRESENT: CCllr Ponton (Chair), CCllr Horsman, CCllr Loudon, CCllr Pilmer, CCllr Taylor.

Also present: PKC Cllr Robertson, PKC Cllr Watters, two invited guests and one member of the public.

APOLOGIES: Cllr Barnacle, Cllr Purves, CCllr Watson.

1. MINUTES OF THE LAST MEETING:

Minutes of the previous meeting were agreed and signed.

2. ACTION POINT UPDATES:

An update on action points from the previous meeting were reported as follows:

Phone box: CCllr Ponton stated (in CCllr Watson's absence) that it was confirmed that a request to ask the Glenfarg Improvement Team to renovate the Phone box to accommodate books for an exchange would go ahead. *(CCllrs Ponton, Watson)*

Lochelbank Wind Farm Fund: CCllr Pilmer stated that an update statement about the fund and further funding had been given to CCllr Watson to be published in the December issue of the Glenfarg Newsletter. Further information is to be released by Foundation Scotland pending a Press release this January. The Glenfarg village requires one/two new members of the public to sit on the Committee as our Ward's representatives and that CCllr Pilmer would process the matter. *(CCllr Pilmer)*

Skip at Duncreevie: CCllr Pilmer reported that he had received correspondence/information from the Skip user, The Binn Group



We don't just sell you a stove
We offer you a lifestyle...

STOVES

All the main manufacturers of stoves are available and we can source almost any stove. To mention just a few Charnwood, Stovax, Hunter, Di Lusso, Firefox, Adura, Arrow. Pop in to the showroom and see the stoves up close.

SPARES

Replacement Glass, Firebricks, Rope seals and Spare Parts are all available and can be fitted by our trained engineers in your home. Flexible liners (15 yr guarantee) and chimney systems available for the self-installers.

INSTALLATION

Our Hetas trained engineers can fit the stove of your choice after carrying out a FREE site survey. You don't have to buy a stove from us. We can fit your own stove - subject to suitability. All building works carried out by our tradesmen.

FUEL SUPPLIES

We stock kiln-dried hardwood logs (<20% moisture) supplied in handy nets or in bulk from our specially designed tipper trailer. Kiln dried kindling and eco-logs (briquettes) made from hardwood supplied in 10kg bags. Delivery service available.

Showroom & Workshop 62 Muirs - Kinross KY13 8AU

Tel: 01577 330526 Mob: 07885 722125

W: www.stovestuff.scot

E: craig@stovestuff.scot

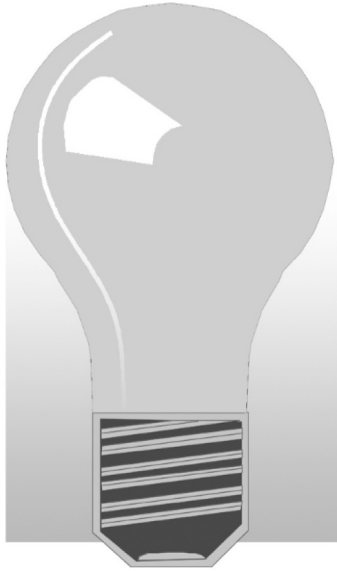


FOR A FREE
SURVEY CALL
US TODAY

and Cllr Robertson. Thereafter, CCllr Ponton reported that she had been notified about PKC's Planning department's intervention and that matters were in hand because this skip requires Planning Permission that was not at this stage granted. CCllr Loudon requested that a letter should be sent to The Binn Group however, it was decided following a recommendation, that the matter be dealt with by PKC Planning. (CCllr Pilmer)

HGV Traffic through village: CCllr Pilmer reported that he had been in correspondence with The Binn Group and that they would address the matter for their own vehicles notwithstanding the necessity to carry out their business within the Glenfarg village area. The Binn Group would contact other HGV company users recommending to make use of alternative routes. CCllrs Loudon and Taylor and one member of the public spoke about the speed of HGV's reputedly heading for the Binn site and CCllr Loudon requested a letter be sent to one particular company regarding their HGV's speed and use of the village as a route to the Binn site. However, Cllr Robertson recommended that the Community Policing Team be notified and a request made by letter raising a concern about the speed of traffic in general and that a monitoring of speed be carried out in due course especially where the northbound and southbound (30mph, 40mph to 60mph) limits change. (CCllr Pilmer)

Kinross-shire Forum: CCllr Ponton raised the topic of Glenfarg's representation at the Forums, that include all Community Councils within the Kinross- shire area, and the financial funding opportunities that exist for many causes that may be missed should we not be represented. A discussion took place about the various funding opportunities and that we must continue to take part in the Forums. Cllrs Robertson and Watters stressed the importance of various funding opportunities such as the Community Investment Fund highlighting what could be



John Allison

(electrician)

*'Ardblair', East Blair,
Glenfarg, Perth PH2 9QL*

Tel: 01577 830 678

Mobile: 07717 791 484

Email: johnwallison@btinternet.com

All types of electrical work undertaken

Also:

Oil and gas central heating faults ~ Telephones
Computer network cabling ~ TV aerials and
distribution ~ Satellite re-alignment, alterations and
distribution ~ Wall mounted TVs installed

FREE ESTIMATES/ADVICE

available, for what activity e.g. local transport, disadvantaged topics and agreed that small and large Community Councils are represented equally to submit solo and joint funding requests. CCllrs to ensure that a representative attends any forthcoming Forum meeting and to ensure that any funding opportunity is acted on. Cllr Robertson spoke about a Rural Transport survey and that 1% of the PKC Budget be spent locally.

(All CCllrs)

3. SCHOOL LIASON

CCllr Pilmer read out a letter in the absence of Cllr Purves. The letter, on behalf of Arngask Primary School, stated that excellent work had been carried out in view of the alterations, that the school had adapted well and was progressing successfully.

4. Planning Report

CCllr Pilmer reported on the notified Applications and Decisions:

GCC Planning Report January 2019

Applications

Ref. No: 18/02169/PAA Erection of a general purpose agricultural shed

Land 50 Metres North West Of Glendy Steading Glenfarg

Ref. No: 18/02174/FLL Change of use of dwelling house to form extension to village hall (Class 10) and ancillary restaurant (Class 3)

The School House Greenbank Road Glenfarg Perth PH2 9NW

Ref. No: 18/02152/FLL Change of use, alterations and extension to steading to form a holiday accommodation unit Steading 50 Metres South West Of Wood Side Glenfarg

ALPHAVET VETERINARY CENTRE

39 High Street, Kinross, KY13 8AA

For a caring professional service for all domestic pets



TELEPHONE 01577 863 328

E-MAIL: alphavet@alphavet.co.uk

WEBSITE: www.alphavet.co.uk

Scotland's 1st Veterinary Practice Website!

Consultations by appointment

Monday to Friday 9.00am to 12.00 noon
and 4.00pm to 6.00pm

Saturday 9.00am to 12.00 noon

Reception is open: Monday to Friday 8.30am to 6.30pm
and Saturday 9.00am to 12.00 noon



***For our 24-hour Emergency Service
please telephone 01577 863 328***



Your Help Would be Appreciated

Your Community Councillors liaise closely with Perth & Kinross Council to ensure our community is kept in good repair and safe for all.

However, they cannot be everywhere so your help is requested: if you find a pothole, a street light that isn't working, a damaged road sign or a grit bin that is empty or similar – please report it. Do not assume someone else has done it.

You can contact PKC direct on 01738 475000 or log into the PKC website at www.pkc.gov.uk and follow the "Report It" link.

Thank you.

Ref. No: 18/02098/FLL Erection of a garage

Inveraray House Drunzie Glenfarg Perth PH2 9PE

Ref. No: 18/02062/FLL Erection of 4 dwelling houses

Land 40 Metres North East Of East Fordel Farm Glenfarg

Decisions

18/02158/PNA Extension to agricultural building

Newton Of Balcanquhal Glenfarg Perth PH2 9QD.

Status: Approved

Comments were asked for and a discussion took place concerning Planning Applications in general and would the GCC comment on particular ones. It was decided that the GCC would always review where necessary and advise persons to seek guidance/advice from PKC Planning. It was noted further that Planning can be a contentious issue for both applicants, affected residents and officials.

5. POLICE REPORT

No police were in attendance although they were notified. CClr Pilmer stated that he reports relevant advice from the Community Council aimed police bulletins (which is circulated via the Glenfarg Grapevine). Previous notifications contained warnings on bogus workmen, scamming emails and telephone calls.

6. GLENFARG VILLAGE HALL UPDATE REPORT

Prior to the report being read by Cedric Wilkins, warm congratulations were extended to him for being appointed Chairman of the PKC Countryside Trust.

YOUR LOCAL PLUMBER

**NO CALL OUT CHARGE - NO JOB TOO SMALL
DISCOUNT FOR SENIOR CITIZENS**

- Boilers - New Installations, Repairs and Servicing (OIL, NG & LPG) & Landlords Safety Certificates
- Bathrooms - New Installations, Upgrades & Shower Repairs
- Central Heating - Radiator valves repaired & replaced, system descale & flush, new radiator installations, Under floor heating, Fitting of gas hobs & cookers
- Dripping Taps - Outside Taps - Plumbing in washing machines & dishwashers - Toilet Repairs - Drains etc



**DOUGLAS MILLER
01577 861623**



Stewart Funeral Directors

14 High Street, KINROSS KY13 8AN
Tel. (01577) 864607



**Modern Hygienic Preparation Room
Private Family Viewing Suite
24 Hour Personal Service
Specialist Ambulance Transfers
Funeral Planning Consultations
Memorial Sales by Regency Memorials**

24 Hour Emergency Service Tel. (01577) 864607

Cedric Wilkins read a report from the Trustees as follows:

We are delighted to confirm that the Village Hall has been successful in raising money necessary to purchase the former Schoolhouse that adjoins the hall. The money for the acquisition will come from the Scottish Land Fund and RWE Innogy (the wind farm at Lochelbank).

The Trustees hope to be able to complete the acquisition over the next few weeks. Once this is done, an open day will be held to which all will be invited. There will be an opportunity to visit the Schoolhouse and share ideas as to how it might be best brought into use for the benefit of the whole community. The date for this will be advised. This is an exciting opportunity for our village! We hope that everyone will wish to give their help and support as the project moves forward. There will be plenty of opportunities for groups and individuals to lend a hand to make this a success – and to make a big difference to Glenfarg.

On another matter we are pleased to say that the Charity Regulator, OSCR, has confirmed approval of the reorganisation of the hall into an Incorporated Charity, and it is also hoped to complete this process fairly soon

Sent on behalf of the Hall Trustees

In addition to the above statement, C.Wilkins, on behalf of the Trustees, sought an expression of support from the GCC to their project as it was viewed that our support would be beneficial to the project and additional funding requests as a whole. The GCC Secretary was tasked with composing a letter and issuing it in due course.

(CCllr Pilmer)

7.TREASURER'S REPORT:

CCllr Horsman had supplied a Treasurer's Report as follows.



**AVAILABLE 7 DAYS A WEEK
LOCAL RELIABLE PROFESSIONAL
SPEEDY SERVICE FOR EMERGENCIES**

All pests professionally dealt with
Free Surveys Fully Insured
Domestic Commercial Agricultural
Contract work or One-off visits

rats • mice • moles • rabbits • rabbit fencing
bird-proofing • birds • bird-clearance • squirrels
moths • flies • fleas • bedbugs • ants • wasps
spiders • insect infestations • all other problem pests

Call us to sort out your pest problem

01738 81 37 51

07767 35 35 35

www.andylawpestcontrol.co.uk



1. GCC – BALANCE ON ACCOUNT £526.09

Income – Nil

Expenditures – GCC Poppy wreath £34

2. GCC NEWSLETTER ACCOUNT – BALANCE £ 12,328.99

This balance is made up as follows :

	Newsletter	Microgrant	Nursing Fund
		£	£
At 7 th January 2019	7,395.34	1197.15	4,011.00
Income	140.00	Nil	Nil
Expenditures/payments	164.50	250.00	Nil
	<u>7,370.84</u>	<u>947.15</u>	<u>4,011.00</u>

Income/Expenditures since last meeting:

Newsletter:

Income – Newsletter shop tin and Advertisers £140

Expenditures – Newsletter Printing £148, CClr Watson expenses 16.50

Microgrant:

Income – Nil

Expenditures – £250.00

3. SCHOOL FUND £241.00

No Transactions

TOTAL FUNDS HELD £13,096.08 at 7th January 2019

A Microgrant application from Glenfarg SWI for their 100th Anniversary meeting in March was submitted for approval.

J. Stewart & Son

Landscaping and Paving



Landscaping and Ground Works



Ask about turfing

ALL WORK IS CARRIED OUT BY TRAINED CRAFTSMEN
AND IS FULLY GUARANTEED

Call for a **FREE** no obligation estimate

Tel: 01738 245465
Mob: 07516 595192

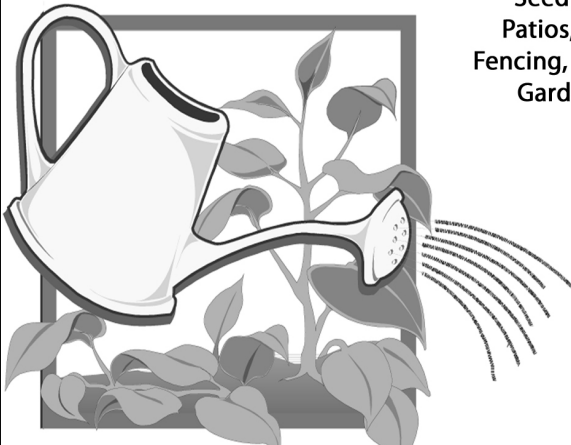
Quality just can't get any better!

LANDSCAPING & DRIVEWAYS
Monoblock • Stone Paving
Slabbing • Decking
Sandstone Walls • Re-rendered
Drainage • Gravel • Cobbles
Heritage • Cotswold Drives
Patios & Paths • Parking Areas
Land Engineering
Tidying and Full Garden Service
Tree Surgery

Brian Todd Landscapes

1 Ash Grove, Glenfarg

Contact: 01577 830 728
or 07718 916 318



Seeding, Wall Pointing, Repairs,
Patios, Driveways, Hedge Cutting,
Fencing, Gutters cleaned and repaired,
Garden Maintenance, Slabbing
& all other odd jobs

FREE
ESTIMATES
COMPETITIVE
RATES

(all CCllrs)

A discussion took place concerning the issue numbers and income from the Village Newsletter as to the benefits of issuing this Newsletter Bi-monthly. It was discussed further that there could be benefits in moving towards a Quarterly issue and having an intermediary A5/A4 Newsletter sheet with vital information being made available through the same outlets. This will require to be explored further due to the advertising activities and what would be expected by the advertisers. Also, our Editor of the Newsletter and the work that is placed upon him to arrange for the Newsletter publication etc should be considered.

(CCllr Horsman)

8. AOCB:

a) CCllr Mcleish has resigned from the community council due to work and personal reasons. The CCllrs thank her for her work on behalf of the GCC and wish her well for the future.

The GCC is still looking for new CCllrs and should you wish to become involved in a worthwhile activity then do please contact the Secretary c/o secretary@glenfarg.org

b) Who owns the Glenfarg Railway tunnels. CCllr Pilmer received a letter requesting information on access to carry out a "Film Shoot". The first point of contact is Balmano Estate Office and this will be notified to the enquirer. (CCllr Pilmer)

c) Facebook Page. CCllr Ponton led a discussion on a Facebook page for the GCC. It was felt that further investigation of other Community Councils' Facebook pages be investigated before a decision is agreed on. (CCllr

Loudon)

Additionally, a member of the public advised that he had a contact for a person that could assist in the modernisation of the Village Web Site. To be agreed on at a future date.

(All CCllrs)

TYREFAIR

TYREFAIR LIMITED

Unit 11
Bridgend Industrial Estate
Kinross

There is now a specialist tyre and battery dealer in Kinross that opens every day of the week, and has tyres and batteries at prices to suit your budget. **TYREFAIR** is a family business, with staff that have many years of professional experience in the tyre trade, and you can find them at **Unit 11, Bridgend Industrial Estate, or telephone on KINROSS 865656**. **TYREFAIR** welcomes trade account and offers the following goods and services:

- New tyres for cars and vans
- Guaranteed re-treaded tyres
- 4x4 tyres for business and leisure
- High performance tyre specialists
- Wheel alignment
- Top brand quality batteries
- Puncture and Vulcanised repairs
- Number plates made while-you-wait

TYREFAIR has a comfortable lounge, where you can relax while the work is carried out and you can rest assured that we will treat your vehicle with the care and respect that you demand.

WHY NOT CALL IN, OR TELEPHONE NOW FOR MORE INFORMATION?

KINROSS (01577) 865 656



**KEEP
CALM
I'LL DO
THE
IRONING**

Sophie Dingle

07786 245 800
Glenfarg, Perthshire

24 - 48hr Turn around
Free collection and delivery
minimum order £8



Woodlands Bed and Breakfast

Church Brae, Glenfarg

www.woodlands-bandb.co.uk

Off Church Brae at end of lane below church

Ample car parking.

Two double bedrooms with king size beds

Resident's lounge

To book phone Cedric or Heather Wilkins

01577 830300

d) Green routes for walking and cycling friendly roads. Cllr Loudon raised this matter and Cllr Robertson stated that in general the activity had been very successful. There was a discussion seeking clarification from PKC extending the Green routes to include Deuglie and Rossieochil. However, Cllr Robertson stated that this would be a long-term vision/commitment due to other routes in Perthshire being carried out first.

e) Crash barriers on the Glenfarg to Bein Inn road. CCllr Ponton raised the matter of providing more safety on the verge relating to a steep part of the riverbank not offering protection to road users. The crash barrier towards the Bein Inn is prior to the Railway Viaduct and it was discussed that this barrier should be extended southwards. Cllr Robertson is to send an PKC contact name to CCllr Pilmer to correspond with for raising the matter further.
(CCllr Pilmer)

f) Extension for Christmas Lights south of village centre. CCllr Ponton raised the matter and a discussion took place in relation to where the lights could be positioned and at what cost. It was felt that further investigation be carried out to ascertain likely costs and where the funding could be sourced from.
(CCllr Ponton)

g) Gala day. CCllr Taylor raised the point that the Gala Committee had in fact resigned and that there was now an opening for a new Gala Day Committee volunteers to come forward to take on the task. CCllr Ponton requested CCllr Taylor to prepare an article for publishing to the Glenfarg Community and to be published via the Website/ Grapevine/Poster – still to be agreed by the outgoing Gala Committee.
(CCllr Taylor)

The next meeting of the Glenfarg Community Council will be held on Monday 4th March 2019, 7.30 in the Village Hall.



YOU CAN ADVERTISE HERE

Advertise your business

in the

Glenfarg Newsletter

Annual prices - 6 issues

Full Page £70

Half Page £35

Quarter Page £20

Single issue advert prices available on request.



For all aspects of
PIANO TUNING
and repair
David R. Watt
(01577 830 345)

Genuine Hardwood logs by the trailer-load or part load. Logs cut, split and delivered to suit individual needs.

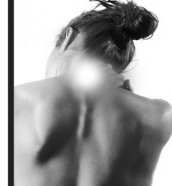
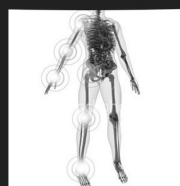


For further details ring
Ewan
Cheape
Glenfarg
830 349

KINROSS Physiotherapy



- **SPRAINS/STRAINS/TEARS**
- **LOWBACK/NECK PAIN**
- **HIP/KNEE/ARM PAIN**
- **GOLFER/TENNIS ELBOW**
- **TENDON INJURIES**
- **ARTHRITIS**
- **TMJ (JAW PAIN)**
- **POST FRACTURE OR DISLOCATION**
- **REHABILITATION FOLLOWING SURGERY**



OPENING TIMES

**MON - FRI
10am - 9pm**

**37 New Road, Milnathort
Kinross KY13 9XT**

**01577 864875
07912 100 845**

enquiries@kinrossphysiotherapy.co.uk



ELSTON (Est. 1983) LANDSCAPES

Landscaping & Stump Grinding

TREE STUMP REMOVAL SPECIALISTS

Tree and shrub planting

Seeding & Turfing

Paths, Patios & Driveways

Hedge Cutting, Pruning and Tree Surgery

Fencing, Trellis & Pergolas

Garden Drainage

Operated Mini Digger, Dumper & Turf Lifter For Hire

01738 850 742

keith@elston-landscapes.co.uk

www.elston-landscapes.co.uk

Fully Qualified & Insured



Index of Advertisers

Home Improvements and Repairs	Andrew Miller Fireplaces	48
	Andy Law Pest Control	62
	Austin Heating & Electrical	47
	Binn Skips	10
	Brian Todd Landscapes	64
	Douglas Miller (plumber)	60
	Elston Landscapes	70
	Henderson Plumbing and Heating	50
	John Allison (electrician)	56
	J. Stewart & Sons (landscaping)	64
Stove Stuff	54	
Health & Beauty	Avon	15
	Ferrier & Mackinnon Optometrists	15
	Kinross Physiotherapy	69
	Lisa Allison (chiroprody)	52
	Silver Lining Hair Studio	49
	Bodyworks Clinic in Glenfarg	46
Shops	Glenfarg Village Store	28
	Jamesfield Farm Shop	7
General Services	Alphavet Veterinary Centre	58
	A S Wealth Management	51
	Cameron & Greig Veterinary Surgeons	47
	Earnside UK & Continental Travel	34
	Leigh Smith Cakes	42
	Letham Farm Glenfarg Logs	68
	Piano Tuning & Repair	68
	Sonias Ironing	58
	Sophie Dingle (ironing)	66
	Tails & Trails (dog walking)	46
	Stewart Funeral Directors	60
	Tyrefair Limited	66
Woodlands Bed & Breakfast	66	

General Information

Doctors' Surgeries

Loch Leven Health Centre, Muirs, Kinross - **01577 862 112**

Daytime emergency number - **01577 865 252** - NHS 24 Out of Hours - **111**

The Surgery, Main Street, Bridge of Earn - **01738 812 000**

Library

The van stops at Main Street on every other Tuesday from 12 to 1pm

Mobile Post Office

Stops outside the Joiner's workshop, Ladeside

Mon 11am-12noon; Wed 11am-12noon; Fri 12.45pm - 2.15pm

Recycling Points

Glenfarg: Arngask School car park for cans, paper and glass, Arngask School playground for clothing and shoes.

Wallace Park car park for glass.

Kinross: Causeway Car Park, Sainsbury's, Station Road, for cans, glass, paper and textiles.

Bridgend Industrial Estate Open Mon-Fri 9am-7pm, Sat-Sun 9am-5pm

Milnathort: Thistle Inn, Black Loan for cans, glass and paper

Kerbside Recycling Service: Waste Collection Dates

Green lid (Non-recyclable waste) **Blue lid** (Paper, cardboard, cans, plastic) **Brown lid** (Garden & food waste)

March	Glenfarg	Green Lid	Fri	1	15	29
		Blue Lid	Fri	8	22	
		Brown Lid	Thu	14	28	
	Duncreevie	Green Lid	Thu	14	28	
		Blue Lid	Thu	7	21	
		Brown Lid	Sat	2	16	30
April	Glenfarg	Green Lid	Fri	12	26	
		Blue Lid	Fri	5	19	
		Brown Lid	Thu	11	25	
	Duncreevie	Green Lid	Thu	11	25	
		Blue Lid	Thu	4	18	
		Brown Lid	Sat	13	27	
May	Glenfarg	Green Lid	Fri	10	24	
		Blue Lid	Fri	3	17	31
		Brown Lid	Thu	9	23	
	Duncreevie	Green Lid	Thu	9	23	
		Blue Lid	Thu	2	16	30
		Brown Lid	Sat	11	25	